



Oregon Fish and Wildlife Commission

11 October 2019

Exhibit E



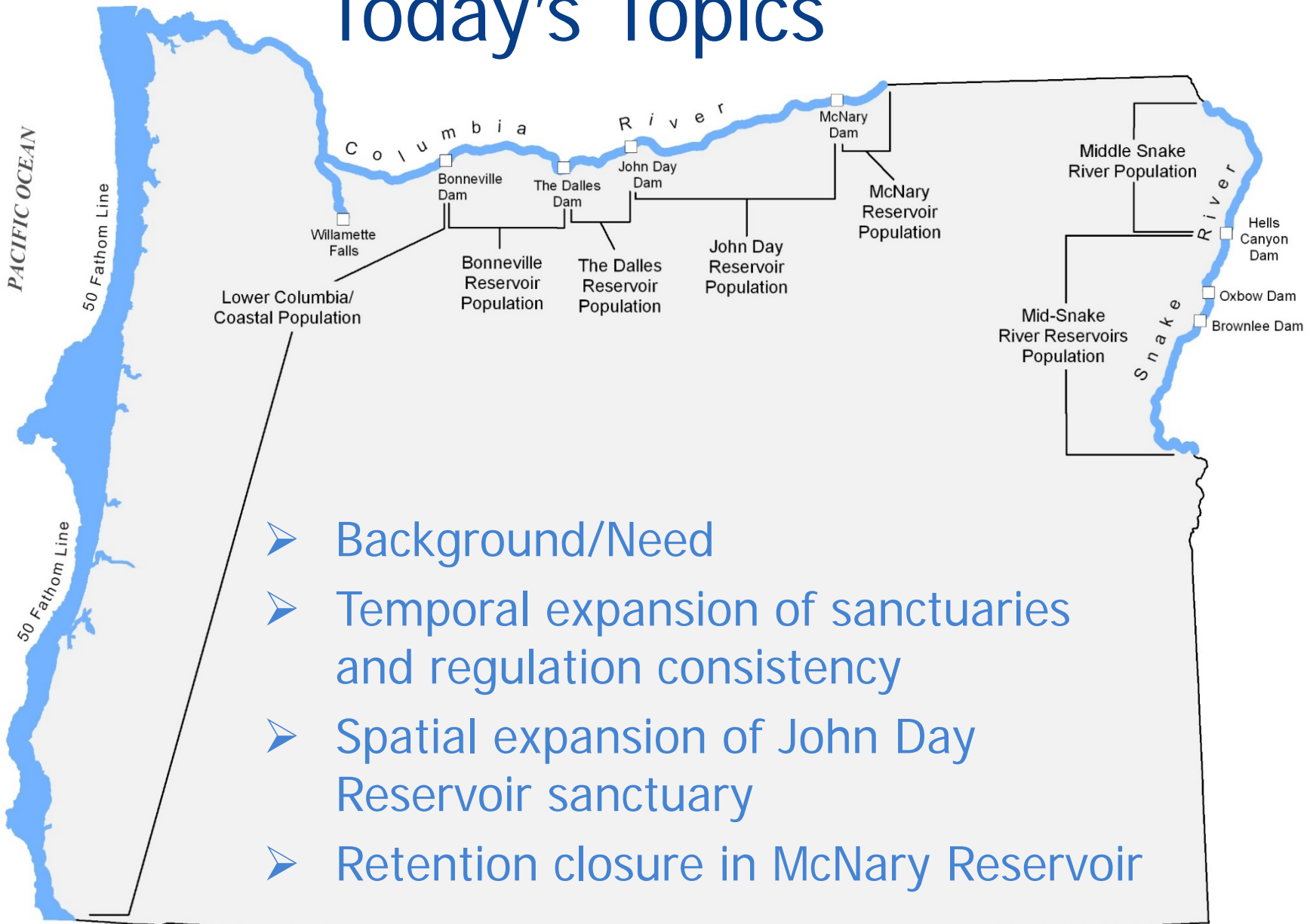
Columbia River Sturgeon Angling Regulations Upstream of Bonneville Dam

Tucker Jones

Ocean Salmon and Columbia River Program Manager



Today's Topics



Need for Proposed Changes

The proposed changes are needed to:

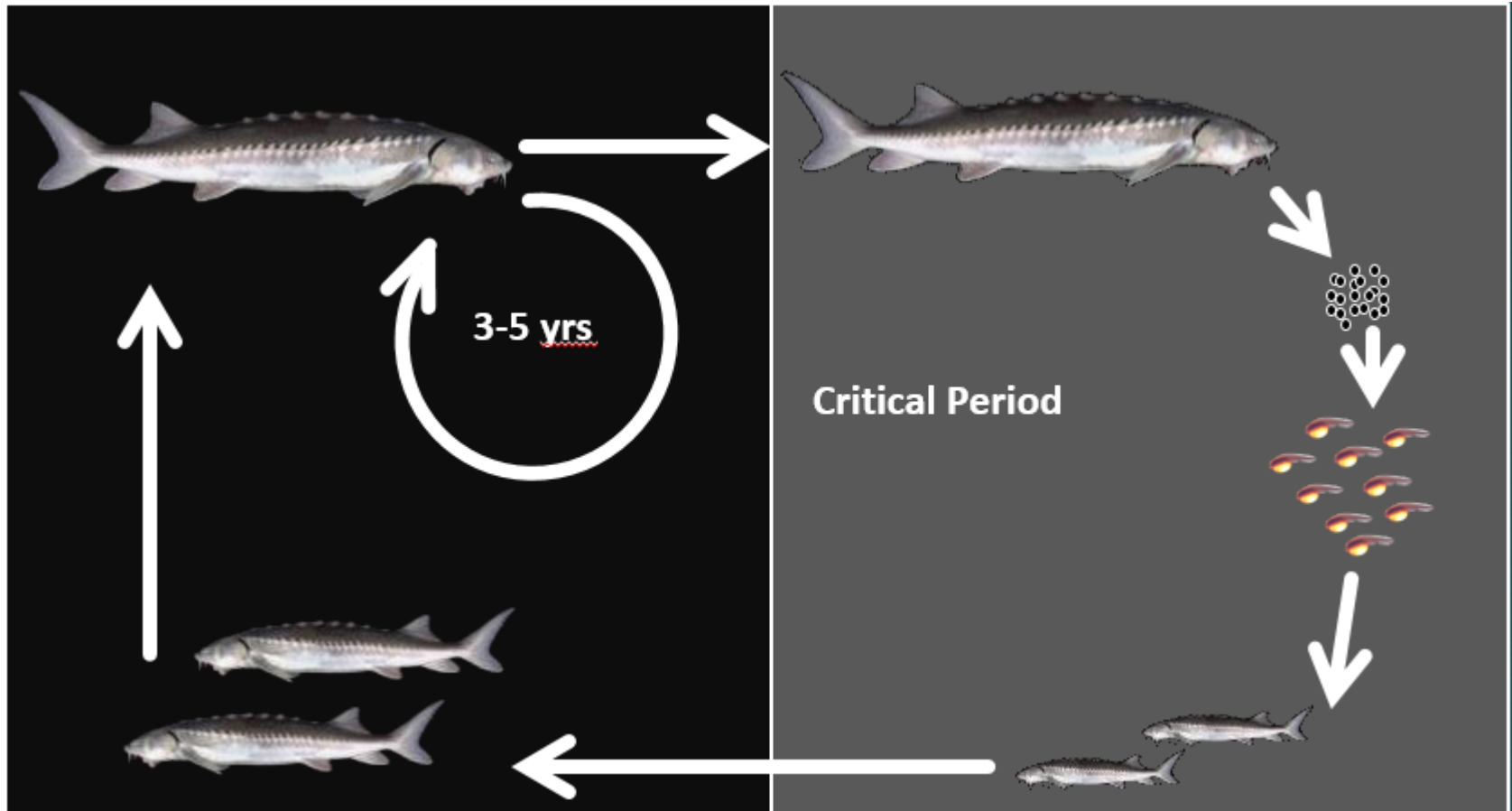
- Increased protections for spawning white sturgeon in the impounded reaches of the jointly managed Columbia River
- Improve consistency in white sturgeon angling regulations
- Maintain concurrent regulations with the State of Washington – who are planning to implement identical regulation changes

Public Involvement

Three jointly conducted public meetings were held:

- 22 May 2019 in The Dalles, Oregon
- 11 June 2019 in Kennewick, Washington
- 12 June 2019 in Hermiston, Oregon

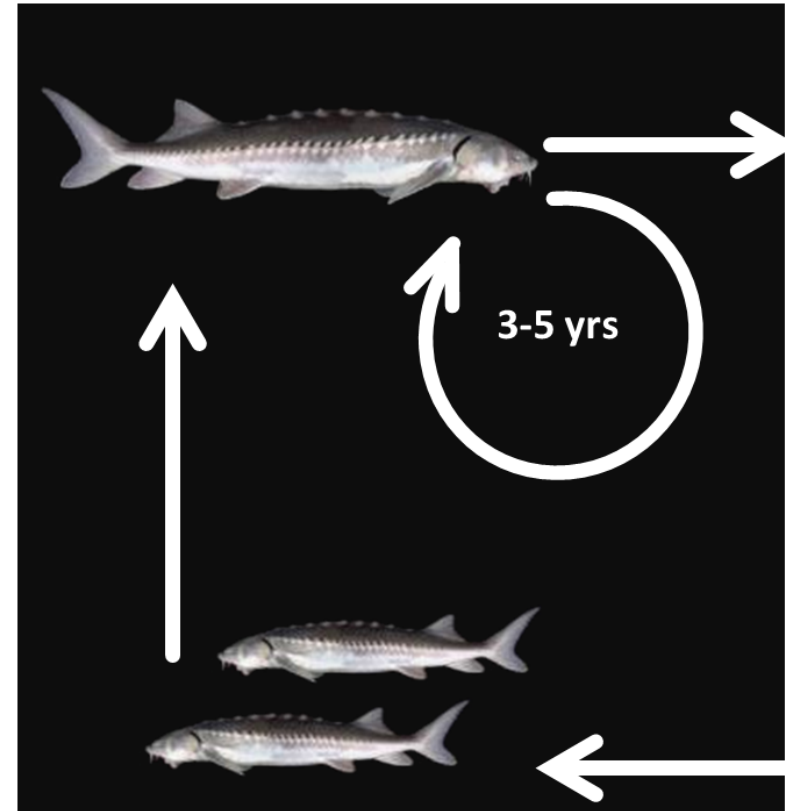
White Sturgeon Life Cycle



White Sturgeon picture by Rene Reyes, USBR Conceptual model adapted from Klimley et al. 2015

White Sturgeon Life Cycle (cont.)

- White sturgeon are periodic reproductive strategists
 - This means that they spawn only every 3-5 years,
 - Critical Period from previous slide is important in terms of acute issues, e.g., egg loss through dewatering, adult mortality events, etc.,
 - Sub-lethal effects from repeated chronic stress during this maturation cycle can lead to egg-reabsorption,
 - Which can also cause recruitment issues



CR Spawning Sanctuaries

- Lower Columbia River, adopted in 1996, expanded in 2010.
 - Area: From a line Navigation Marker 82 on the Oregon shore westerly to a boundary marker on the Washington shore near Fir Point upstream 9 miles to Bonneville Dam, (Originally 4.5 River Miles).
 - Closed: May 1 – Aug 31, (Originally May and June only).

- Lower Willamette River, adopted in 2010, expanded 2014.
 - Area: From the Lake Oswego-Oak Grove RR Bridge upstream ~6.5 miles to Willamette Falls, (Originally 1 River Mile).
 - Closed: May 1 – Aug 31.

CR Spawning Sanctuaries

- Bonneville Reservoir, adopted in 2014.
 - Area: From The Dalles Dam downstream 1.8 miles to a line from the east (upstream) dock at the Port of The Dalles boat ramp straight across to a marker on the Washington shore.
 - Closed May 1-July 31
- The Dalles Reservoir, adopted in 2006.
 - Area: From John Day Dam downstream 2.4 miles to a line crossing the Columbia at a right angle to the thread of the river from the west end of the grain silo at Rufus, Oregon.
 - Closed May 1-July 31.
- John Day Reservoir: adopted 2006.
 - Area: From McNary Dam downstream 1.5 miles to the Highway 82 (395) Bridge.
 - Closed May 1-July 31.

Recruitment

Young of the Year Surveys

Recruitment index value (E_p)

- 0 means “no measureable recruitment (red).”
- Higher values equate to higher densities of age-0 fish.
- Values are reservoir specific



Year	BON	TDA	JDA	MCN
1997	0.82	0.74	0.53	
1998	0.68	0.73	0.08	
1999	0.61	0.67	0.22	0.08
2000	0.12	0.14	0.00	0.00
2001	0.00	0.00	0.00	0.00
2002	0.17	0.17	0.00	0.06
2003	0.09	0.00	0.00	0.00
2004	0.12	0.06	0.00	0.00
2005	0.06	0.03	0.00	0.03
2006	0.69	0.47	0.13	0.06
2007	0.31	0.14	0.00	0.06
2008	0.59	0.31	0.00	0.06
2009	0.51	0.42	0.13	0.06
2010	0.34	0.36	0.08	0.00
2011	0.41	0.61	0.46	0.26
2012	0.08	0.53	0.10	--
2013	0.18	0.19	0.00	--
2014	0.37	0.14	0.00	--
2015	0.00	0.00	0.00	--
2016	0.10	0.00	0.00	--
2017	0.26	0.47	0.00	--
2018	0.21	0.08	0.00	--
Mean	0.31	0.27	0.08	0.05

Proposed Sanctuary Changes

- Temporal expansion in Bonneville, The Dalles, and John Day Reservoirs: Extend spawning sanctuary through August 31.
 - Full closed period would be May 1-August 31.
 - Provides additional protections during critical phases
 - Aligned with sanctuary rules below Bonneville Dam.

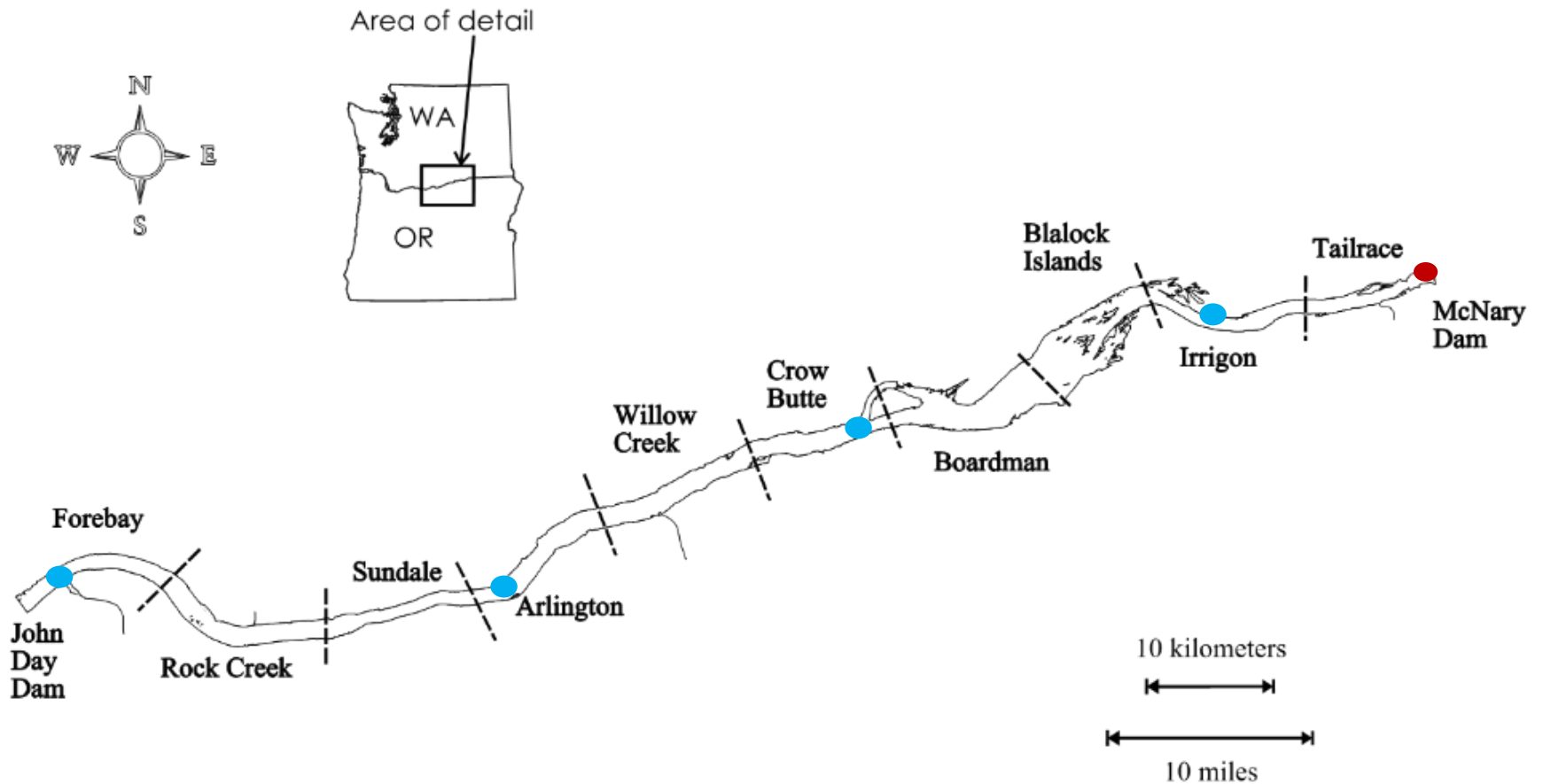
Additional changes proposed for John Day Reservoir

John Day Changes

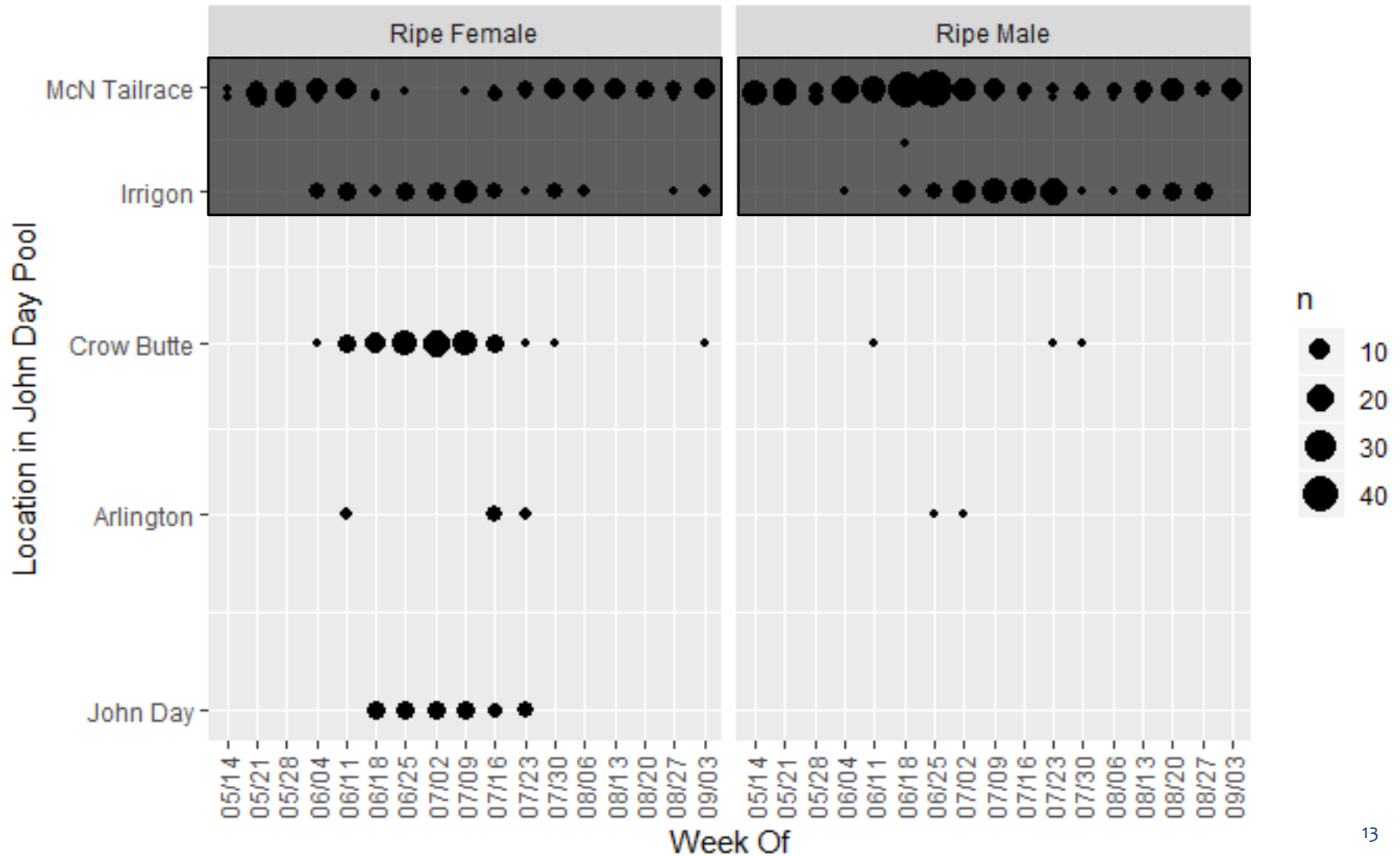
Telemetry Study

- Two Year, BPA-Funded Movement Study
 - Out years at minimal additional costs with infrastructure in place
- Target: Tag 30 broodstock White Sturgeon (15 male and 15 female) per Year
 - 2018: 15 males, 11 females
 - 2019: 15 males, 8 females
- Monitor movements throughout and across years

Telemetry Study



Telemetry Study - 2018



**JOHN DAY RESERVOIR STURGEON SANCTUARY BOUNDARY
CURRENT BOUNDARY AND PROPOSED ALTERNATIVES**



Proposed: Grain Elevators (RM 278)

Current Boundary: Hwy 82/395 Bridge (RM 290)

WASHINGTON

OREGON

COLUMBIA RIVER

McNary Dam

Umatilla

Irrigon

Proposed Sanctuary Changes

Percent of mature white sturgeon protected by extending John Day spawning sanctuary in time and/or space

Sex	Current Sanctuary	Expand Time	Expand Location	Expand Both
Male	92.1%	88.0%	99.7%	99.7%
Female	78.6%	83.4%	82.6%	86.8%

Proposed Sanctuary Changes

- Bonneville, The Dalles, and John Day Reservoirs: Extend spawning sanctuary through August 31.
 - Full closed period would be May 1-August 31.
 - Provides additional protections during critical phases
 - Aligned with sanctuary rules below Bonneville Dam.

- John Day Reservoir: From McNary Dam downstream 13.5 miles to a line from the Patterson Ferry grain elevators to marker on the Washington shore.
 - In combination with temporal increase provides additional protections for nearly all spawning sturgeon in John Day Reservoir

Proposed McNary Angling Changes

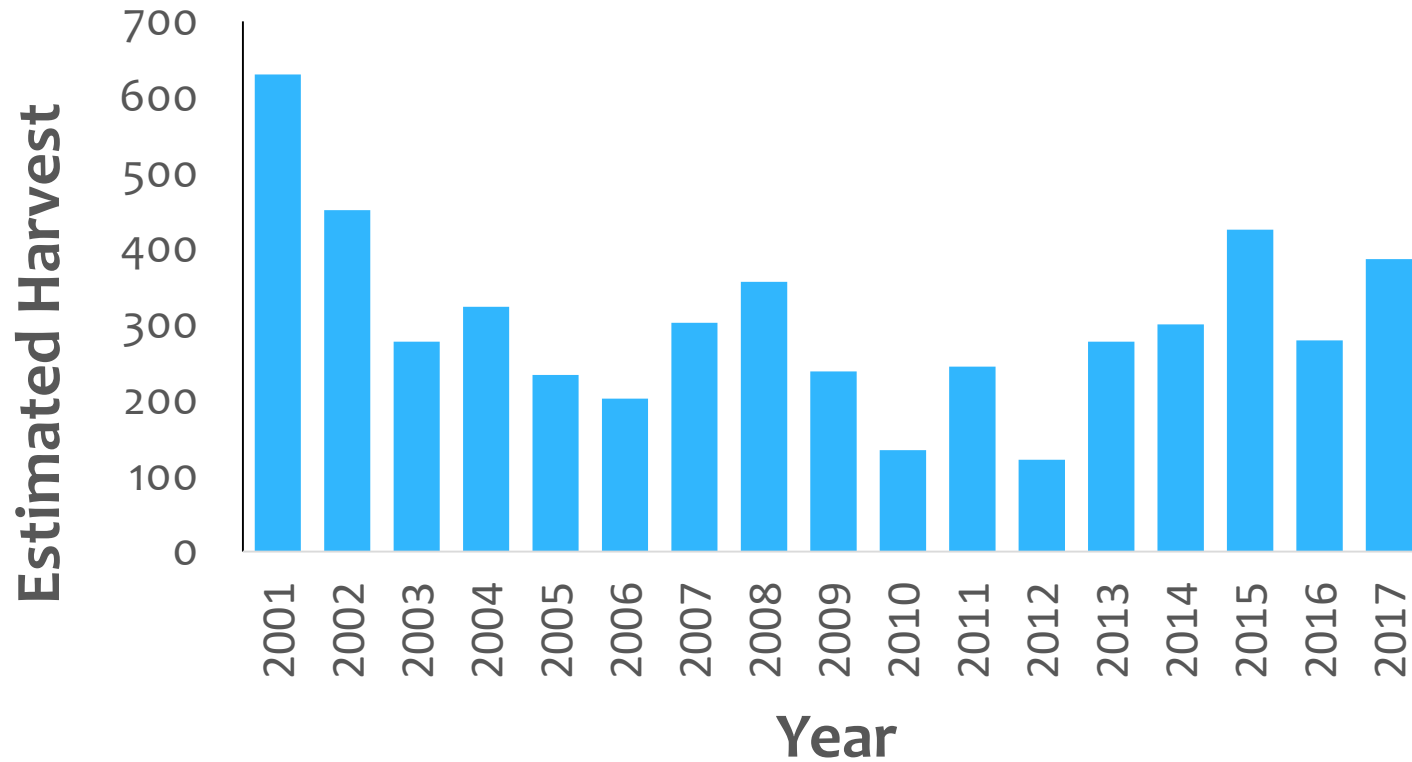
➤ Consistent stock assessments lacking

- Evaluating the population every 3-5 years is necessary to monitor trends in recruitment, mortality rates, and size-class abundance.
- This data could be used to set quotas and ensure we are harvesting sustainably within the population.

➤ Improved Harvest Monitoring

- Creel sampling or improved electronic catch-reporting for more accurate and up to date harvest estimates.

Annual Harvest Estimate in McNary



*From catch report card data

Proposed McNary Angling Changes

➤ Current Regulations

- White sturgeon retention is allowed February 1–July 31 in the Columbia River and tributaries, from McNary Dam upstream to Oregon/Washington border (WA allows up to Priest Rapids Dam, and the Snake River, from the mouth to Ice Harbor)

➤ Proposed Changes

- Closed to retention, catch and release fishing for white sturgeon will be allowed year round in joint state waters.
- Consistent with WDFW proposed changes

Conclusions

Proposed regulations changes:

- Provide increased protections for white sturgeon in impounded reaches between Bonneville and McNary Dams
- Close sturgeon retention upstream of McNary
- Improve consistency in Oregon angling regulations
- Maintain concurrent regulations with Washington in jointly managed waters

Options

1. Adopt modifications to existing permanent white sturgeon angling regulations as proposed in Attachment 3, which would increase temporal scope of sturgeon angling sanctuaries upstream of Bonneville Dam, increase the spatial scope of the sturgeon spawning sanctuary in the John Day Reservoir, and close retention fisheries in McNary Reservoir protections for white sturgeon in impounded reaches between Bonneville and McNary Dams
2. No action at this time
3. Other proposed modification to OAR 635-023-0095

Staff Recommendation

1. Adopt modifications to existing permanent white sturgeon angling regulations as proposed in Attachment 3

Draft Motion: I move to adopt the amendment to OAR 635-023-0095 as proposed in Attachment 3



END

Questions/Discussion?

Follow us on Instagram: [@ODFW_sturgeon_program](https://www.instagram.com/ODFW_sturgeon_program)